



# Lane County Stabilization Center

“Solutions to the behavioral health crisis”

The number of people experiencing mental health crises, addiction, and homelessness in Lane County is rising, emergency services are stressed, and residents and businesses are overwhelmed by the impacts on public safety.



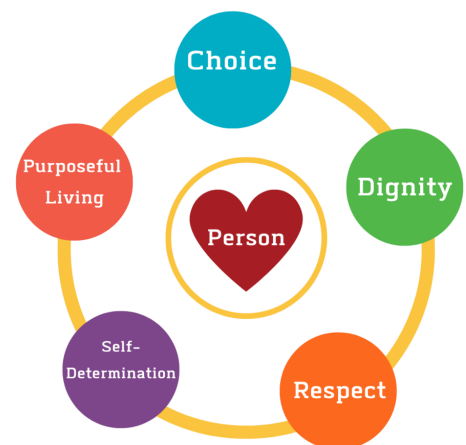
## Access to Care Increases Health and Safety

Lane County Behavioral Health (LCBH) is leading the planning efforts to build and open a **24/7 behavioral health stabilization center**.

## The Stabilization Center will offer a full range of mental health and addiction care

- **Immediate intake** available for walk-ins, police department drop-offs (as a diversion from arrest), and hospital and social services referrals, etc.
- **Connection to long-term supports** to treat underlying challenges

### Person Centered Care



www.laLEADERS.org



## Community Benefits

- Increased safety in public spaces
- Reduced costs for emergency response
- Lower rates of incarceration
- Treatment of underlying challenges

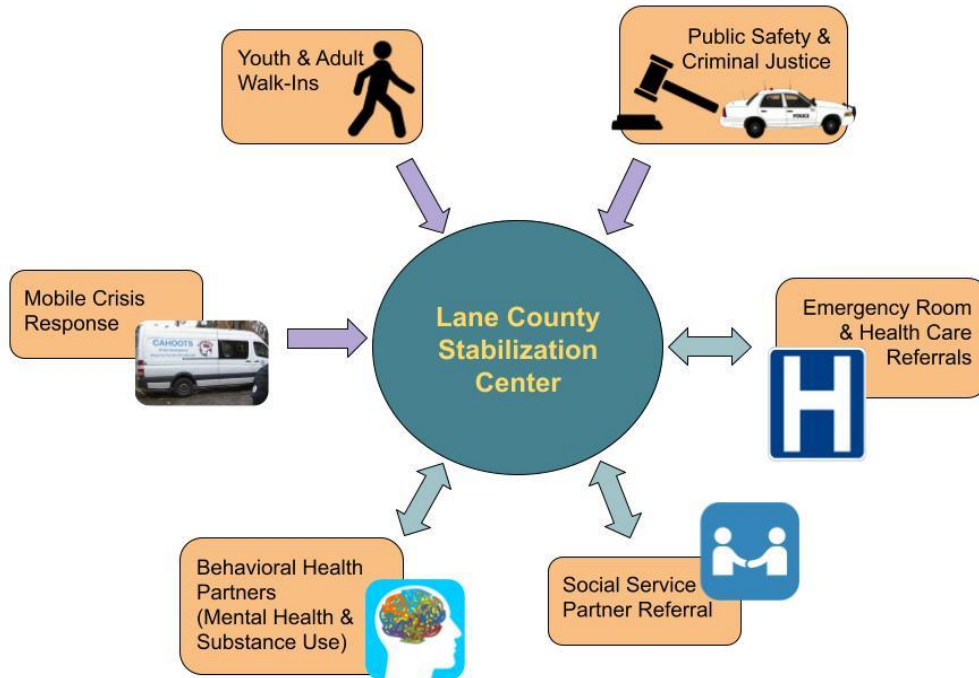
Visit our Website: <https://www.lcstabilizationcenter.com>  
Contact us at: [LCStabilizationCenter@lanecountyor.gov](mailto:LCStabilizationCenter@lanecountyor.gov)



# Lane County Stabilization Center

“Solutions to the behavioral health crisis”

## Access and Referral Process



## Project Timeline

