



# Lane County Stabilization Center

Lane County Health and Human Services  
[LCStabilizationCenter@lanecountyor.gov](mailto:LCStabilizationCenter@lanecountyor.gov)

# What's the problem?

- **More people are experiencing** mental health crises, addiction, and homelessness, and not getting the care they need
- **Emergency services are overwhelmed** and underlying problems remain
- **Residents and businesses are concerned** about impacts on public safety

# The Solution



Lane County is working to open a **Stabilization Center** by 2025 that treats people in crisis and connects them to long-term solutions

# The Stabilization Center will help

- **Reduce incarceration** and ED visits
- **Treat underlying** needs
- **Coordinate** existing resources
- **Increase safety** in public spaces
- **Reduce costs** to the public for emergency response



# The Stabilization Center will offer



**24/7 “No Wrong Door” access for anyone in Lane County experiencing a mental health or addiction crisis**

- **Immediate triage** and intake for care
- **Behavioral health services**, including medication prescription and sobering services
- **Connections** to specialty and/or long-term support
- **Discharge with transportation** and warm handoffs



# The Stabilization Center will be

- **Person-centered**
- **A place to connect** with support for long-term healing
- **Accessible** to all community members
- **Committed** to safety

## Person Centered Care



# Project Background

- **SAMHSA's National Guidelines for BH Crisis Care:** *Released in 2020*
- **Best Practice Standard:** *Crisis Now Model*



- **Launch of a national 24/7 BH crisis line (988):** *By July 2022*
- **Lane County's H&HS Strategic Plan for 2021-2024:** *Creation of a Stabilization Center by 2025 = essential for a complete continuum of care*

# Nationwide Effort



Stabilization Center - Bend, OR

The Bridge Center for Hope - Baton Rouge, LA

Crisis Now Retreat Model - Phoenix, Arizona

Optum Behavioral Health - Tacoma, Washington

Mindy Ellen Levine Behavioral Health Center - Charlotte, North Carolina

Riverside Behavioral Health Campus of Care - Riverside County, California

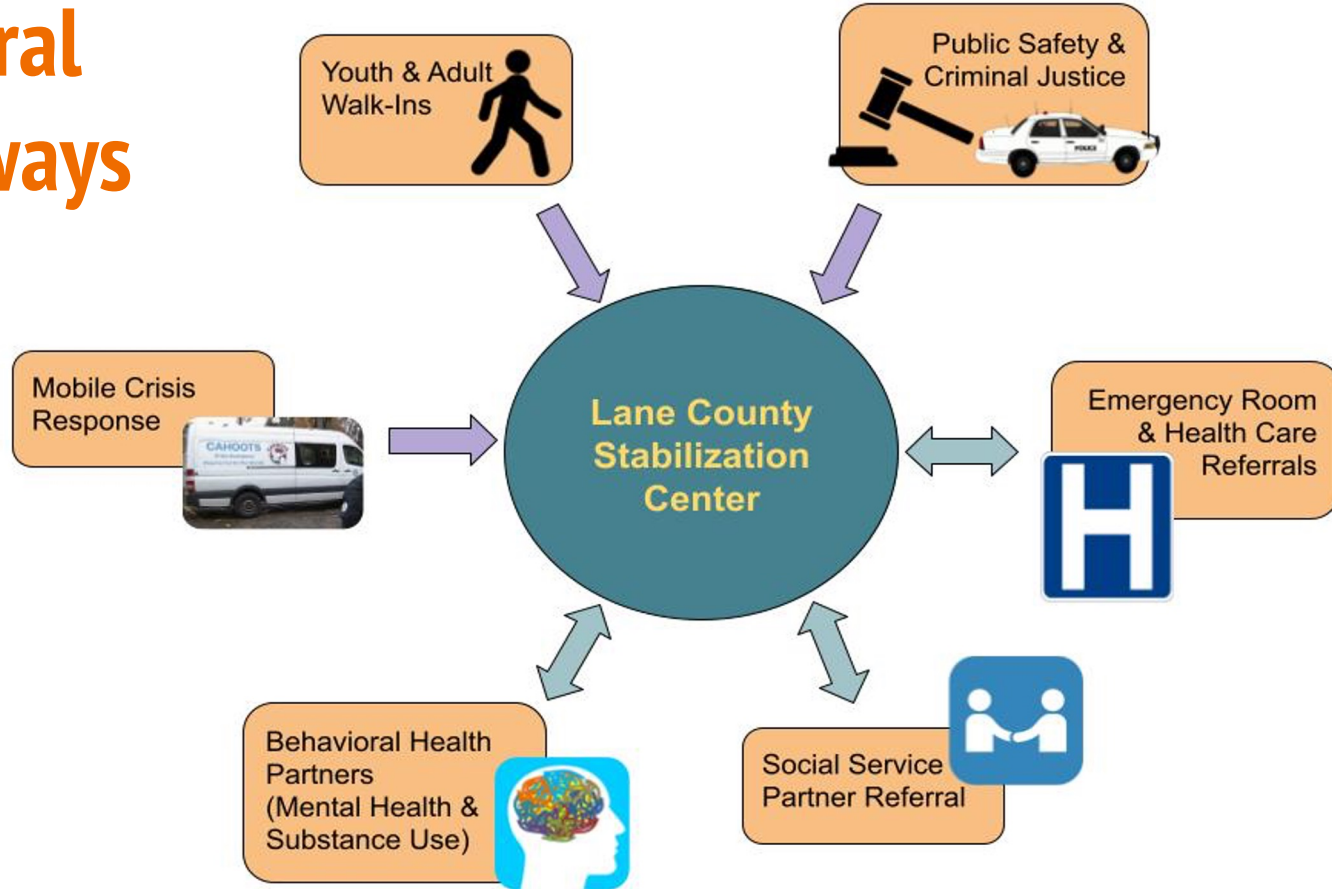




# Accessing the Center

- **Referrals** from hospitals, behavioral health providers, and other social service partners
- **Law enforcement drop-offs**, *as a diversion for arrest*, via separate entrance with a turnaround time goal of <5 minutes
- **Walk-ins**

# Referral Pathways



# Capacity Estimates

Daily capacity to serve **42 individuals at a time**

- 14 adult respite chairs
- 16 adult short-term stabilization beds
- 12 youth short-term stabilization beds

Annual Impact: **8200+ unique individuals served**

- 6700+ unique adults
- 1500+ unique youth



# Project Cost Estimates & Funding Status



- **Cost to Build: \$19M**
- **Annual Operational Expenses: \$15M**
- **Annual Revenue: \$16M**

***To Date: Received 42% of needed capital funds***

# Site Criteria



## BUILDING SPECS

- **29,000+ square feet**
- Approx **75 parking spaces**
- Consider additional uses

## LOCATION & ACCESSIBILITY

- **Drive time of 30 minutes or less** for majority of Lane County population
- Easily **accessible for walk-ins**, single bus line transport, and community referrals
- **Proximity to emergency services**, local inpatient behavioral health unit
- Ease of **law enforcement drop-off**
- Zoned for clinical use

## COSTS

- Manageable renovation costs
- Within budget



# Project Timeline



# Project Management



- **Steering Committee:** *System partners leading the vision and community-based planning*
- **Consultants:** *Providing expertise, data analysis, and recommendations*
- **Lane County:** *Providing the project leadership for implementation*
- **Project Phases:** *Project Vision, Project Management, Secure Funding, Site Identification, Site Purchase, Facility Architecture/Design, Construction, Finalize Operations, and Open Center*