



# Lane County Stabilization Center

Lane County Health and Human Services  
[LCStabilizationCenter@lanecountyor.gov](mailto:LCStabilizationCenter@lanecountyor.gov)

# What's the problem?

- **More people are experiencing** mental health crises, addiction, and homelessness, and not getting the care they need
- **Emergency services are overwhelmed** and underlying problems remain

# How will the Stabilization Center will help

**Reduce incarceration & ED visits**

**Treat underlying needs**

**Coordinate existing resources**

**Increase safety** in public spaces

**Reduce costs** to the public for emergency response



# The Stabilization Center will offer

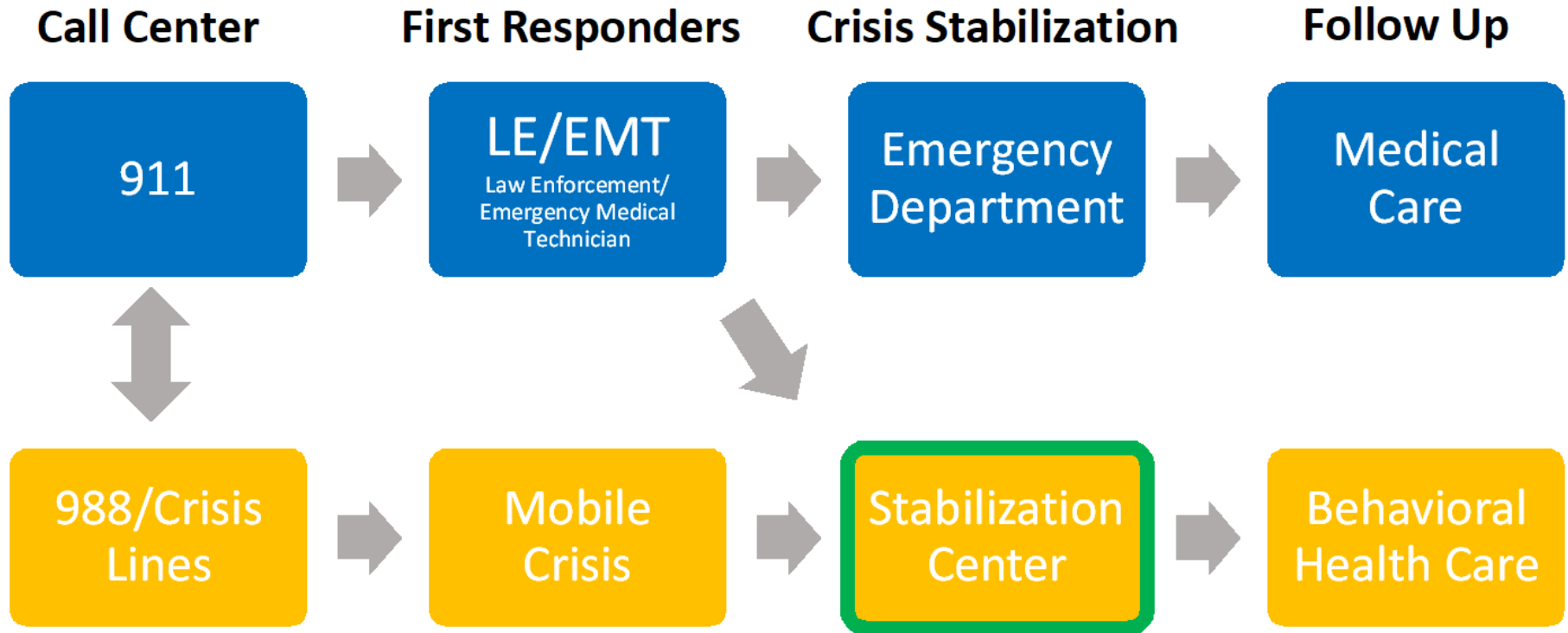


**24/7 “No Wrong Door” access for anyone in Lane County experiencing a mental health or addiction crisis**

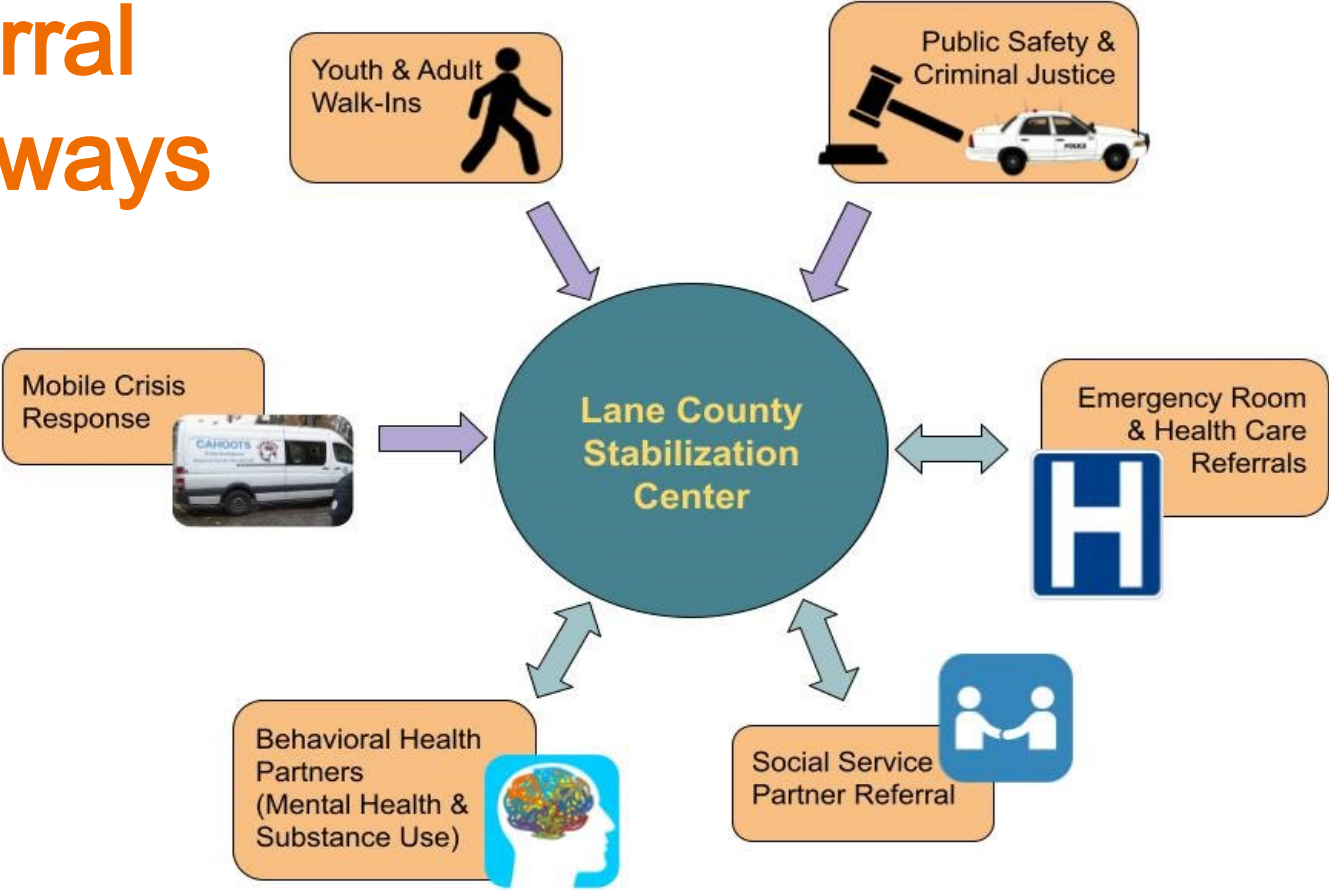
- **Immediate triage** and intake for care
- **Behavioral health services**, including peer support, case management and medication prescription
- **Connections** to specialty and/or long-term support
- **Discharge with transportation** and warm handoffs



# Effective Crisis System



# Referral Pathways



# Capacity Estimates

Daily capacity to serve **42 individuals at a time**

- 14 adult respite chairs
- 16 adult short-term stabilization beds
- 12 youth short-term stabilization beds

Annual Impact: **8200+ unique individuals served**

- 6700+ unique adults
- 1500+ unique youth



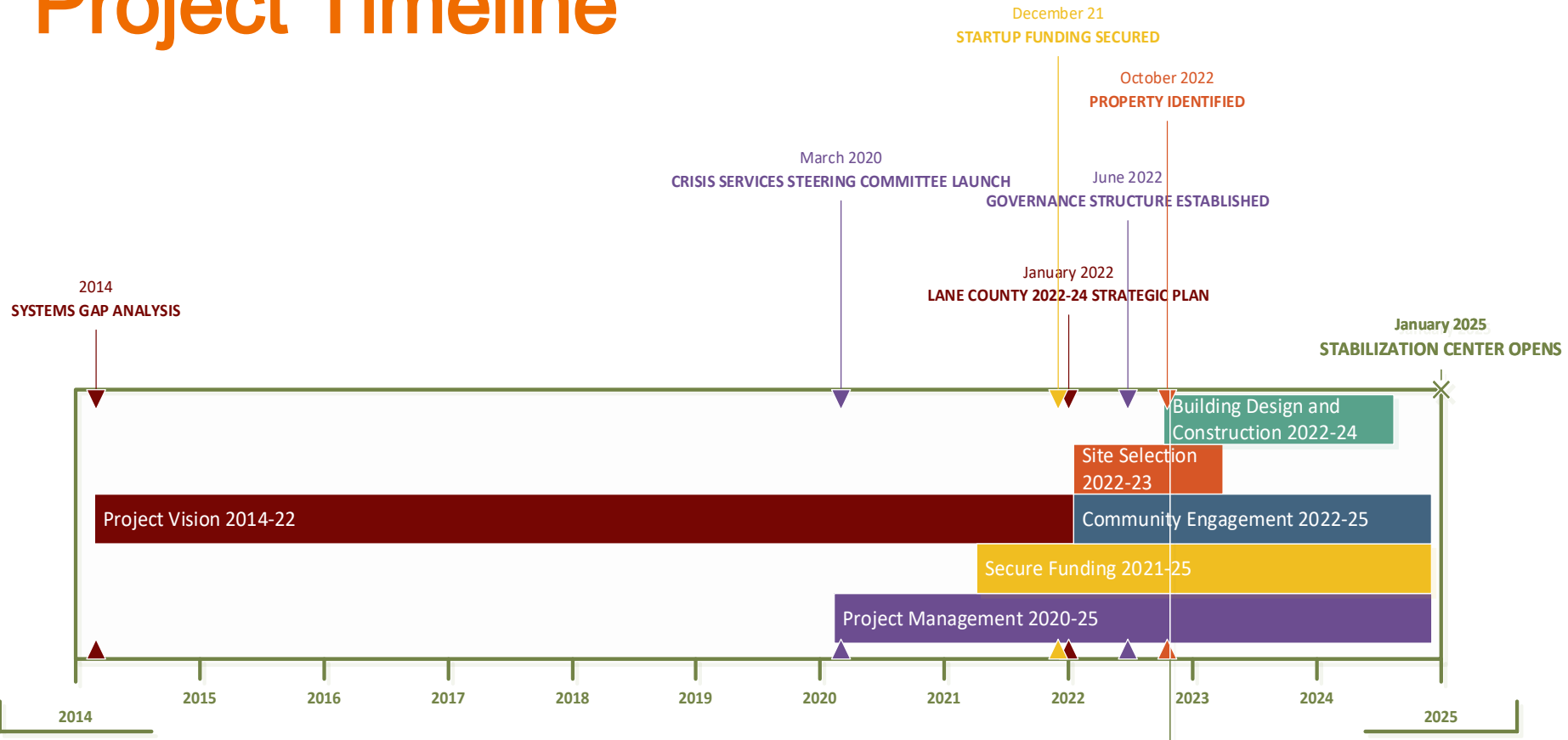
# Project Management



- **Executive Steering Committee:** *Representatives from key stakeholder entities incorporating input from Steering Committee and workgroups to inform decisions*
- **Crisis System Steering Committee:** *System partners leading the vision and community-based planning*
- **Consultants:** *Providing expertise, data analysis, and recommendations*
- **Lane County:** *Providing the project leadership and staffing for implementation*
- **Community Members:** *Providing input to inform decision making via listening sessions and other ongoing efforts*

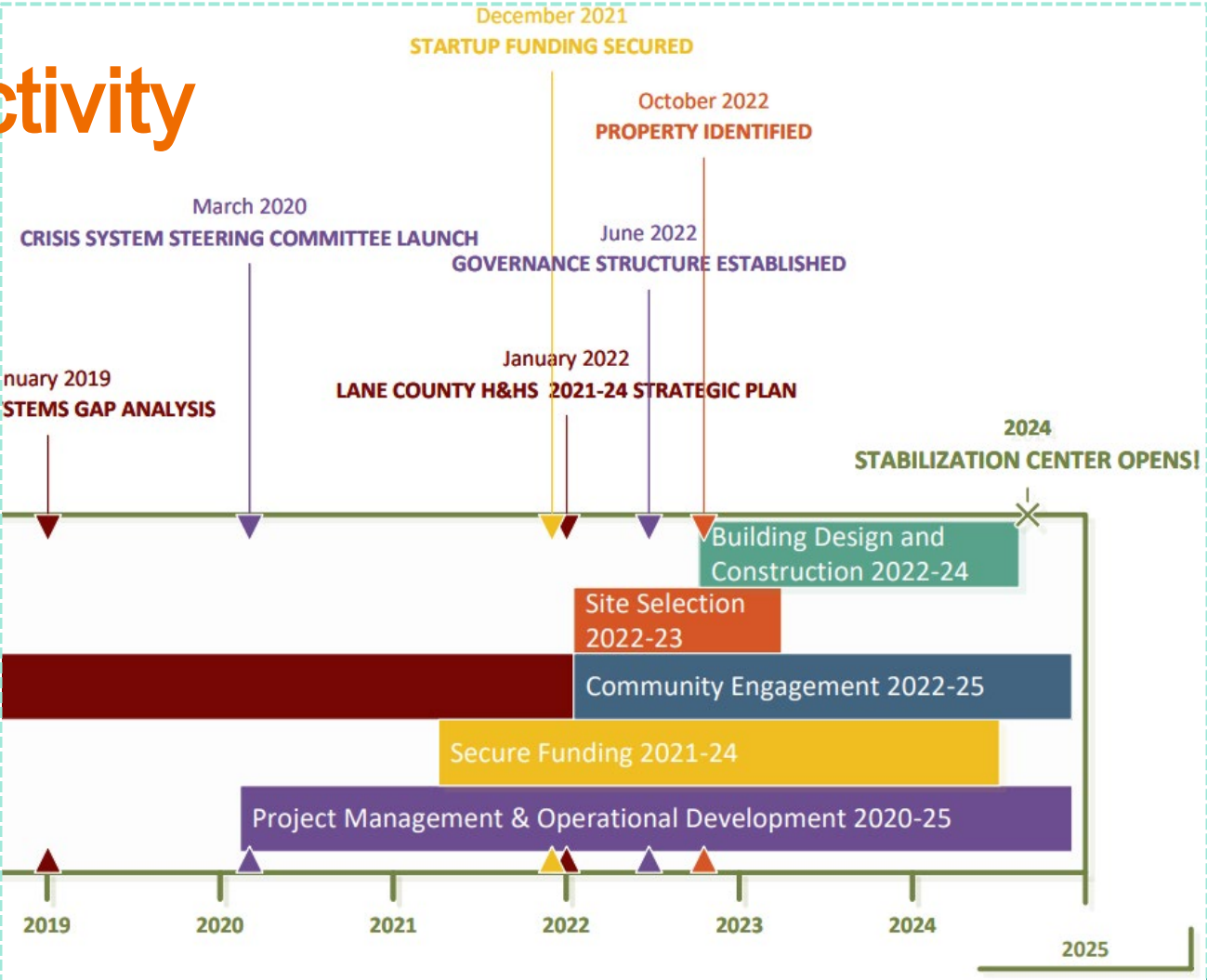


# Project Timeline





# Current Activity



# Siting the Stabilization Center



# Why MLK Jr Blvd?



- **Close proximity to social service and behavioral health partners** including *Lane County Developmental Disability Services, Lane County Behavioral Health, Lane County Youth Services, Looking Glass, Emergence, Laurel Hill Center, Hourglass Community Crisis Center, etc.*
- **Access** to busline, Eugene/Springfield metro areas, and ease of mobile crisis or law enforcement drop offs
- **Serene Setting** with trees and greenery, that is offset from the main road



# How does the property measure up?



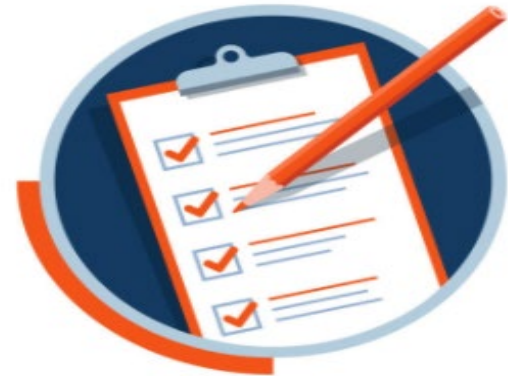
## BUILDING SPECS

- ✓ **29,000+ square feet**
- ✓ **Approx 75 parking spaces**
- ✓ **Potential for additional uses**

## LOCATION & ACCESSIBILITY

- ✓ **Drive time of 30 minutes or less** for majority of Lane County population
- ✓ **Easily accessible for walk-ins**, single bus line transport, and community referrals
- ✓ **Proximity to emergency services**, local inpatient behavioral health unit

- ✓ **Ease of law enforcement drop-off**
- ✓ **Zoned for clinical use**



# Community Engagement Efforts



- **February Listening Sessions**
  - Building Design & Accessibility
  - Program Details
  - Community Impact
  - Wrap up and Next steps
- **Future plans for specific focus groups and ongoing consultation with individuals with lived experience**



# Q&A with Panel Participants